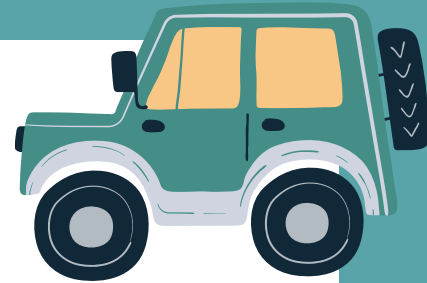




SCHOOL DROP-OFF PROCEDURES



If you are dropping your child(ren) off at school in the morning, please follow the following procedures:

- ☐ Circle around the school and enter the drop-off line along the building
- ☐ Pull ALL the way up to the church. Mrs. Marrone will be there to direct you how far to go.
- ☐ Have students exit from the passenger side of the car closest to the school.
- ☐ Students should not exit your car until line has stopped. Only allow them to exit if you are stopped at or beyond the blue doors.
- ☐ Do not move vehicle until directed to do so.
- ☐ Stop at Mrs. Laubham to make sure no families are waiting to cross.
- ☐ If in the drop-off lane, DO NOT exit your car to assist your child.
- ☐ If your child needs assistance, please park along the hill or in the middle parking spaces and WALK your child(ren) across. Do not allow them to cross on their own.
- ☐ Cross ONLY at Mrs. Laubham when cars are STOPPED.
- ☐ If parked in the middle row, please BACK OUT of the parking space carefully. DO NOT pull out into the drop-off line.
- ☐ Be patient and courteous. Our children are watching!